



HAZELNUT PRODUCTION IN ITALY

EU-TURKEY MEETING

21 October 2016 – Reus (Spain)



Subjects:

- *Production and cultivated land*
- *Price trend*
- *Forecast harvest 2016-17*



Production areas

- ❖ *Lazio*
- ❖ *Campania*
- ❖ *Piemonte*
- ❖ *Sicilia*





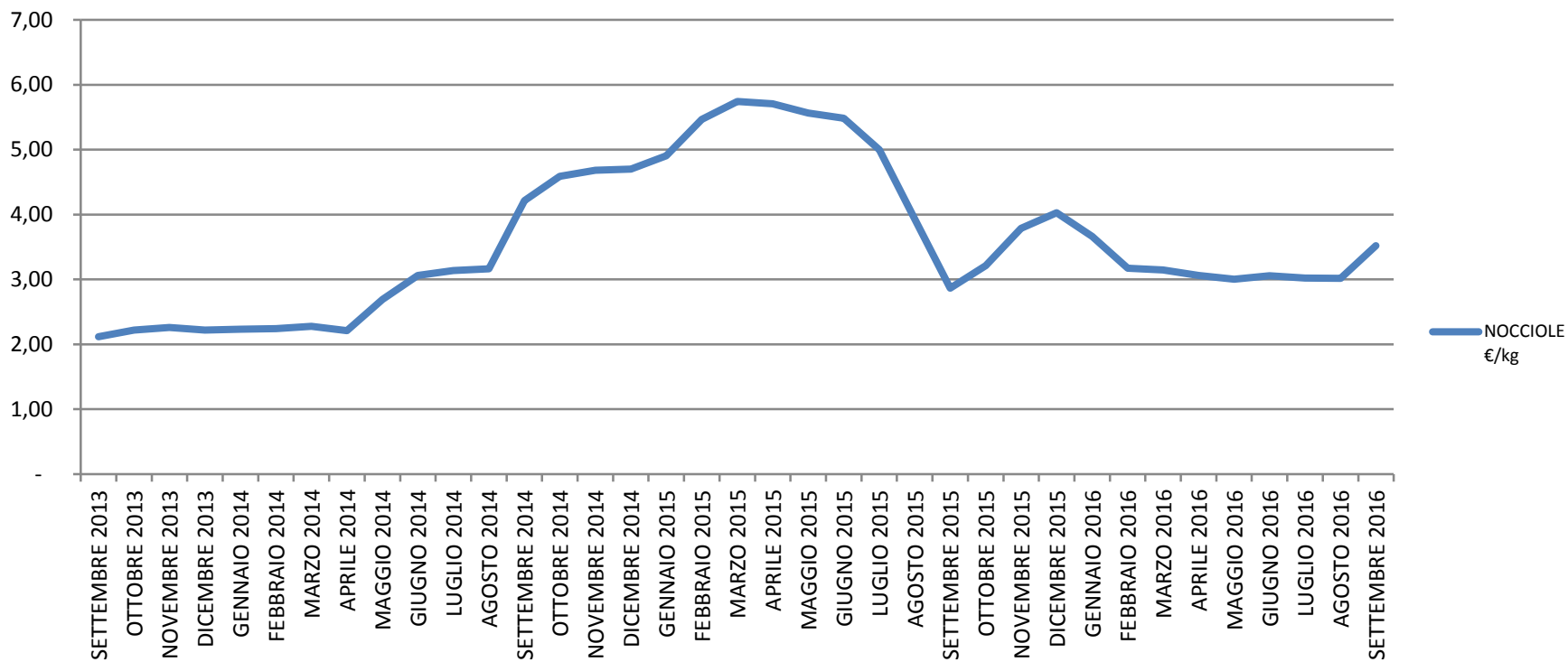
National production

	2013	2014	2015
Harvested production (ton)	131.000	75.000	121.000
Total cultivated land (ha)	71.484	72.125	74.500

Fonte: elaborazione Agrinsieme su dati ISMEA / Istat



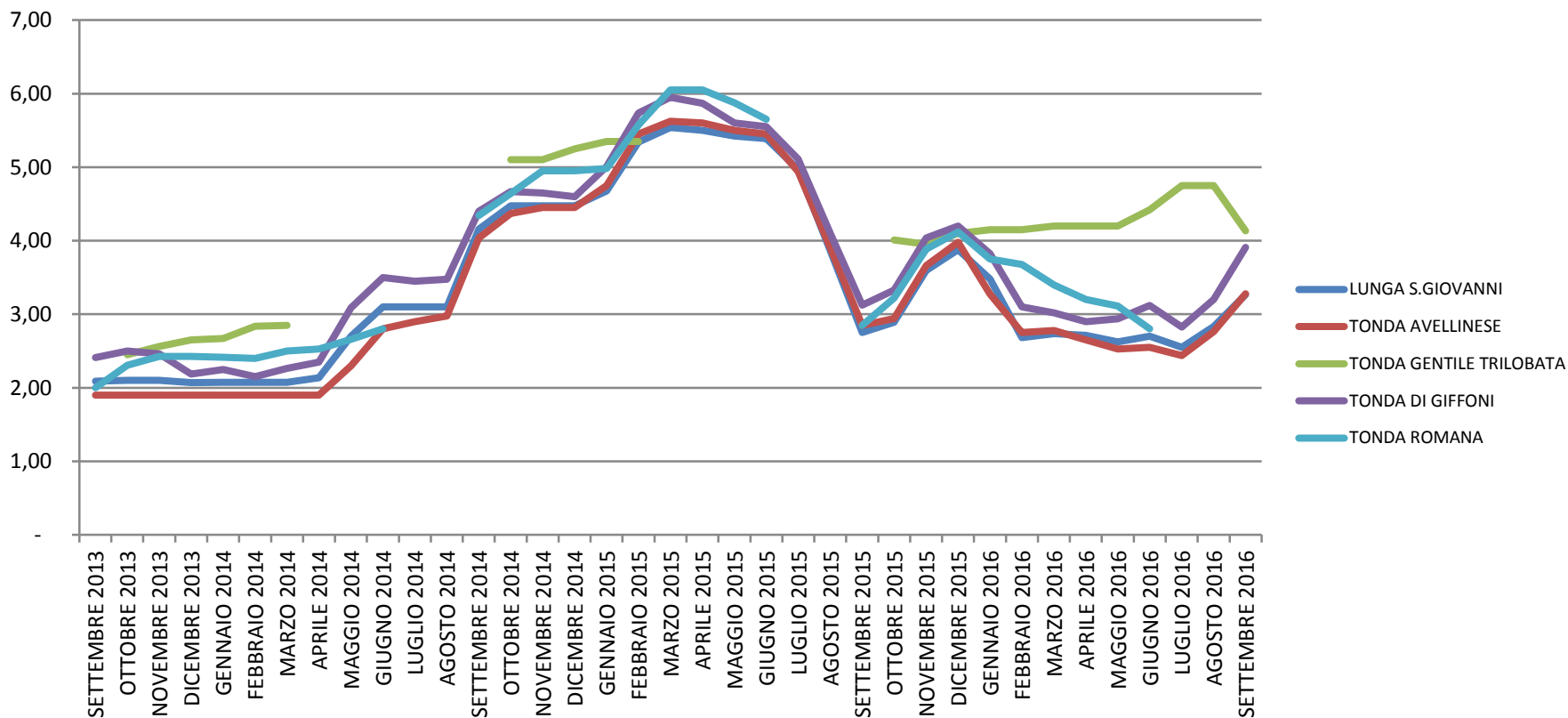
Average monthly price trend



Fonte: elaborazione Agrinsieme su dati Ismea



Average monthly price trend – by variety



Fonte: elaborazione Agrinsieme su dati Ismea

Farmgate price in-shell - week 40 (euro/kg)

Varietà	Prezzo (€/kg)	Var. % su settimana precedente	Var. % su stessa settimana 2015	Var. % su stessa settimana 2014
LUNGA S.GIOVANNI	3,25	0%	20%	-28%
TONDA AVELLINESE	3,30	0%	22%	-24%
TONDA DI GIFFONI	3,90	1%	26%	-15%
TONDA ROMANA	3,65	0%	19%	-18%
TONDA GENTILE TRILOBATA	4,14	0%	1%	---
Tutte le varietà	3,56	0%	16%	-20%

Fonte: elaborazione Agrinsieme su dati Ismea

Average monthly in-shell price by variety (euro/kg)

	ALL VARIETIES €/kg	LUNGA S.GIOVANNI	TONDA AVELLINESE	TONDA GENTILE TRILOBATA	TONDA DI GIFFONI	TONDA ROMANA
SEPTEMBER 2016 vs SEPTEMBER 2015	23%	19%	15%	12%	25%	23%
SEPTEMBER 2016 vs SEPTEMBER 2014	-16%	-21%	-19%	5%	-11%	-19%
SEPTEMBER 2015 vs SEPTEMBER 2014	-32%	-34%	-29%	-20%	-29%	-34%
SEPTEMBER 2015 vs SEPTEMBER 2013	36%	32%	50%	50%	30%	43%

Fonte: elaborazione Agrinsieme su dati Ismea



Forecast harvest 2016-17

	Production	Quality	Price	Investments trend
Piemonte	+30%	good	stable	Strong increasing
Lazio	+20%	medium	decrease	Light increasing
Campania	+15%	good	decrease	Light increasing
Sicilia	-50%	medium	decrease	Light increasing

Fonte: elaborazione Agrinsieme su dati ISMEA / Istat



Forecast production 2016-17

2015/2016	2016/2017
121.000	130/140.000

GRAZIE PER L'ATTENZIONE

