



European Commission
Agriculture and Rural Development



EU - TURKEY COOPERATION SCHEME ON HAZELNUTS

3 October 2014

**DG Agriculture and Rural Development
European Commission**





Topics



European Commission
Agriculture and Rural Development

Review of the 2013-2014 campaign

- Production
- EU-28 Imports
- Intra EU-28 Trade
- EU-28 Exports
- Unit prices

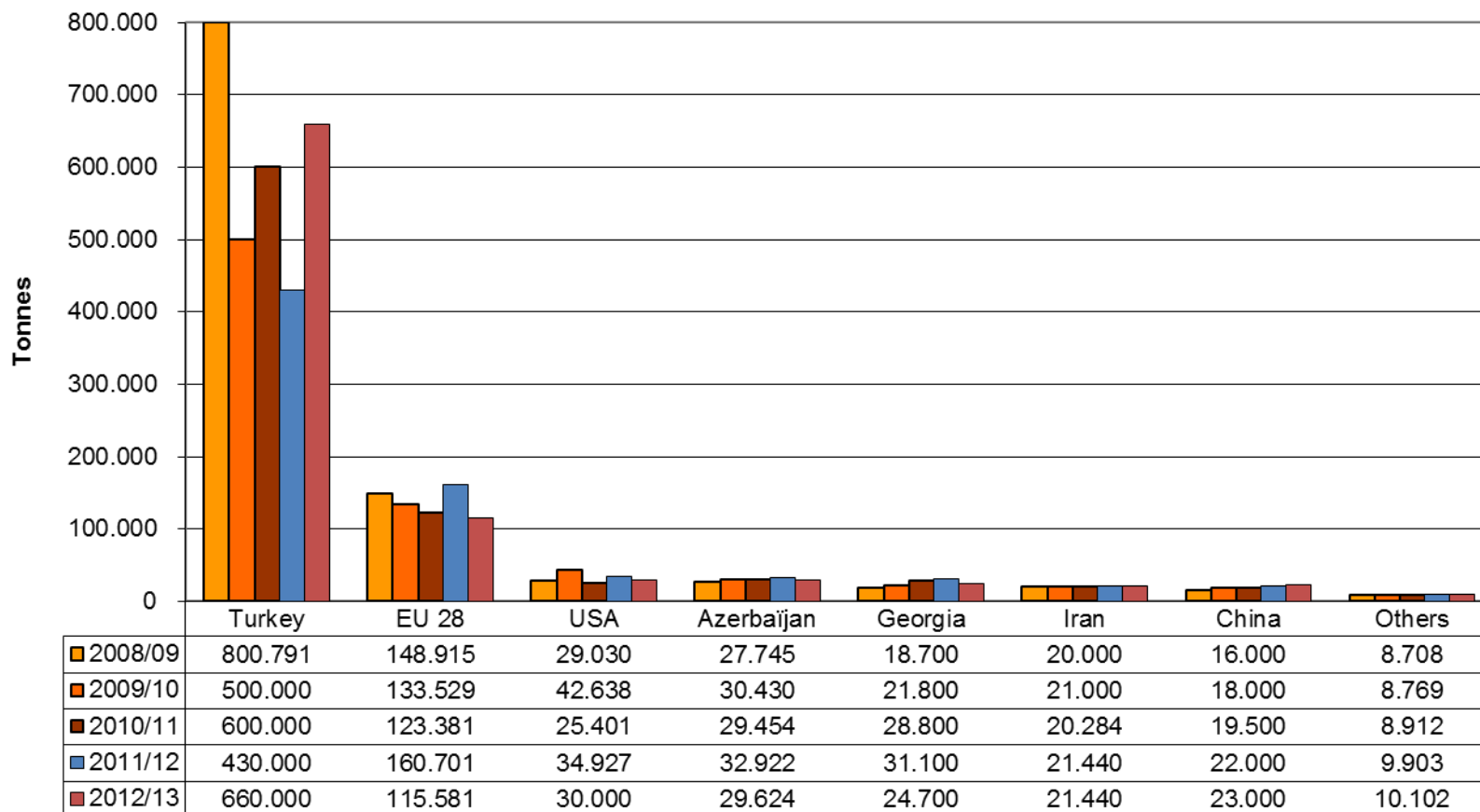




World Production



European Commission
Agriculture and Rural Development



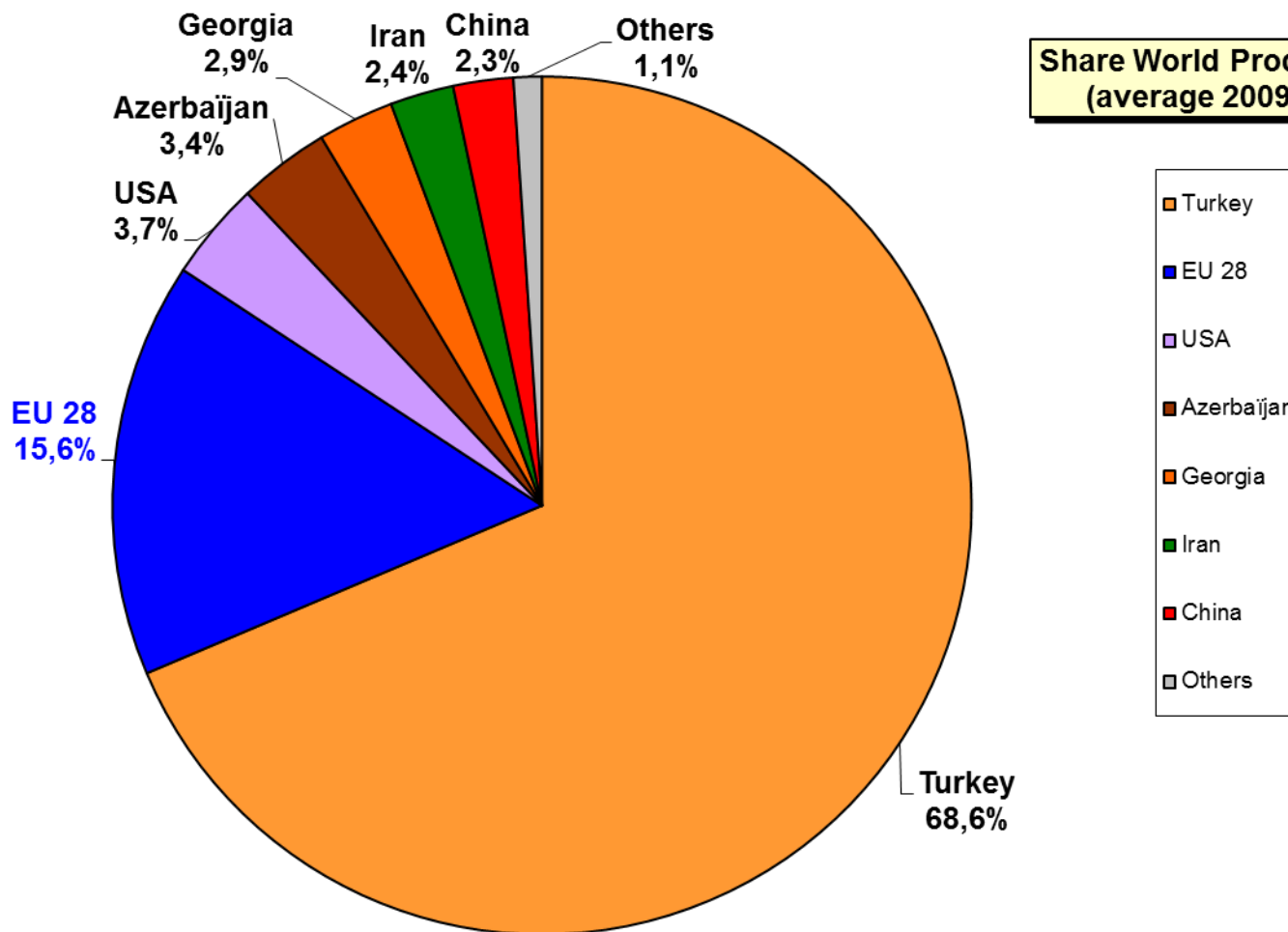


World Production

Share (average 2009/2013)



European Commission
Agriculture and Rural Development

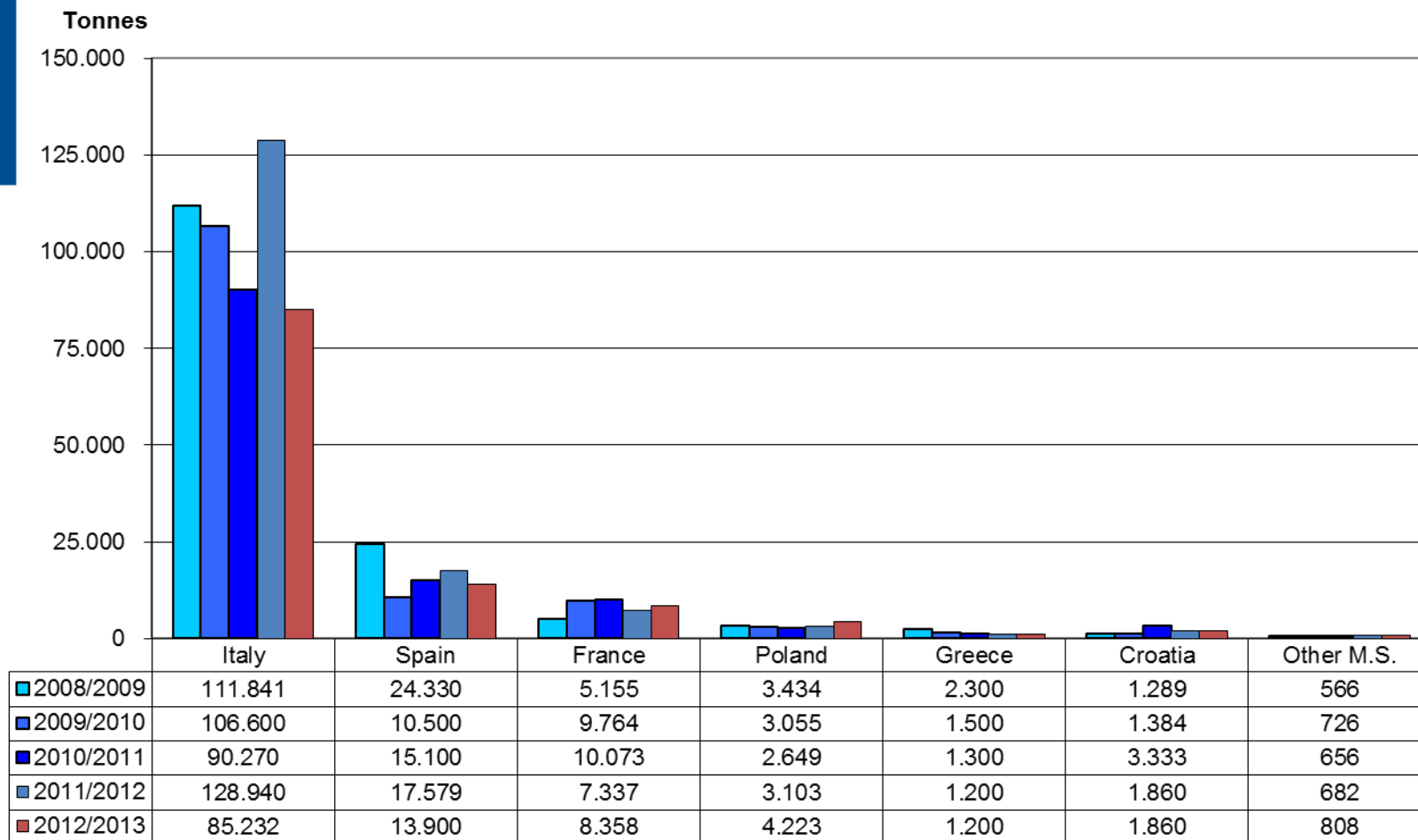




EU28 Production



European Commission
Agriculture and Rural Development



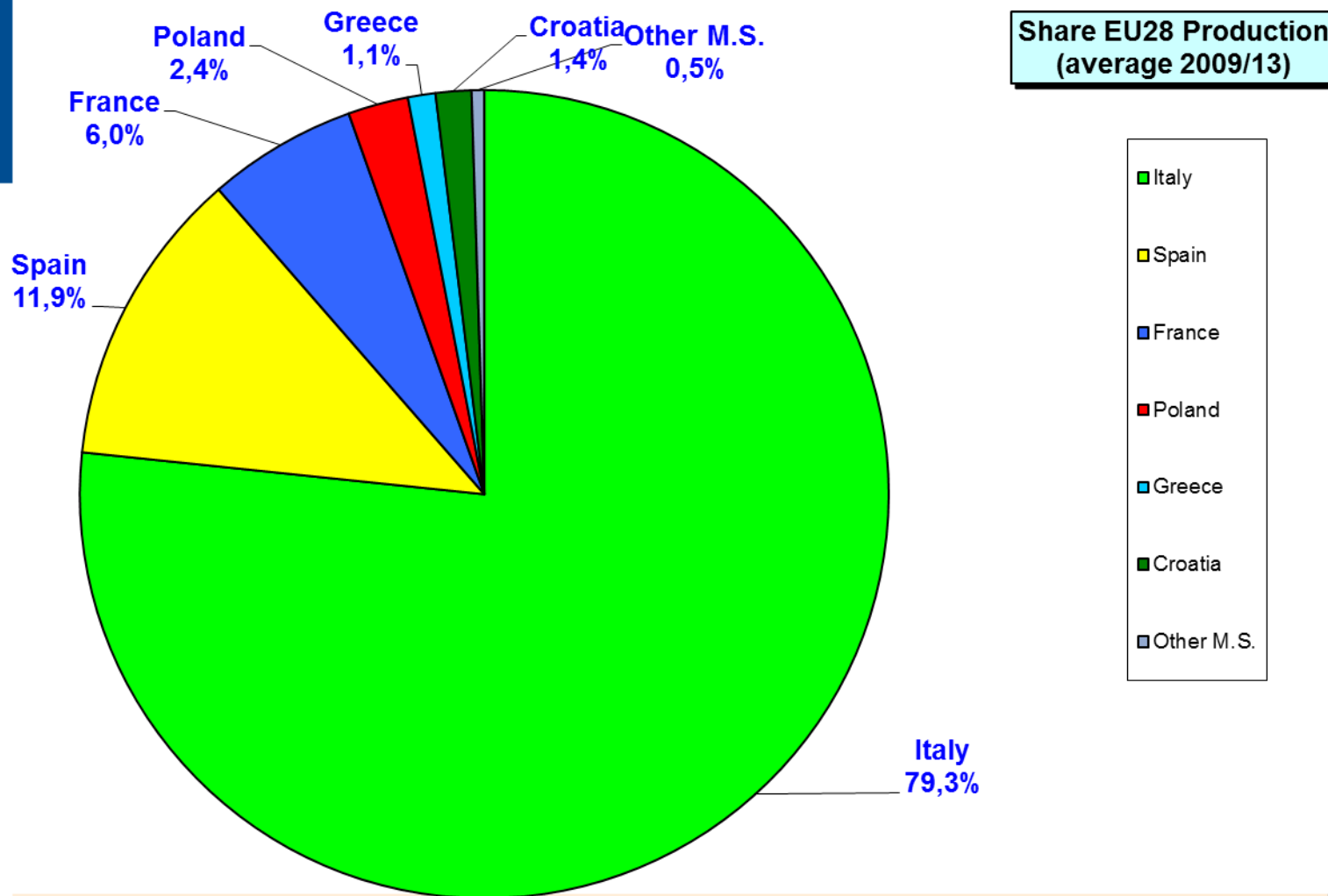


EU28 Production

Share (average 2009/2013)



European Commission
Agriculture and Rural Development



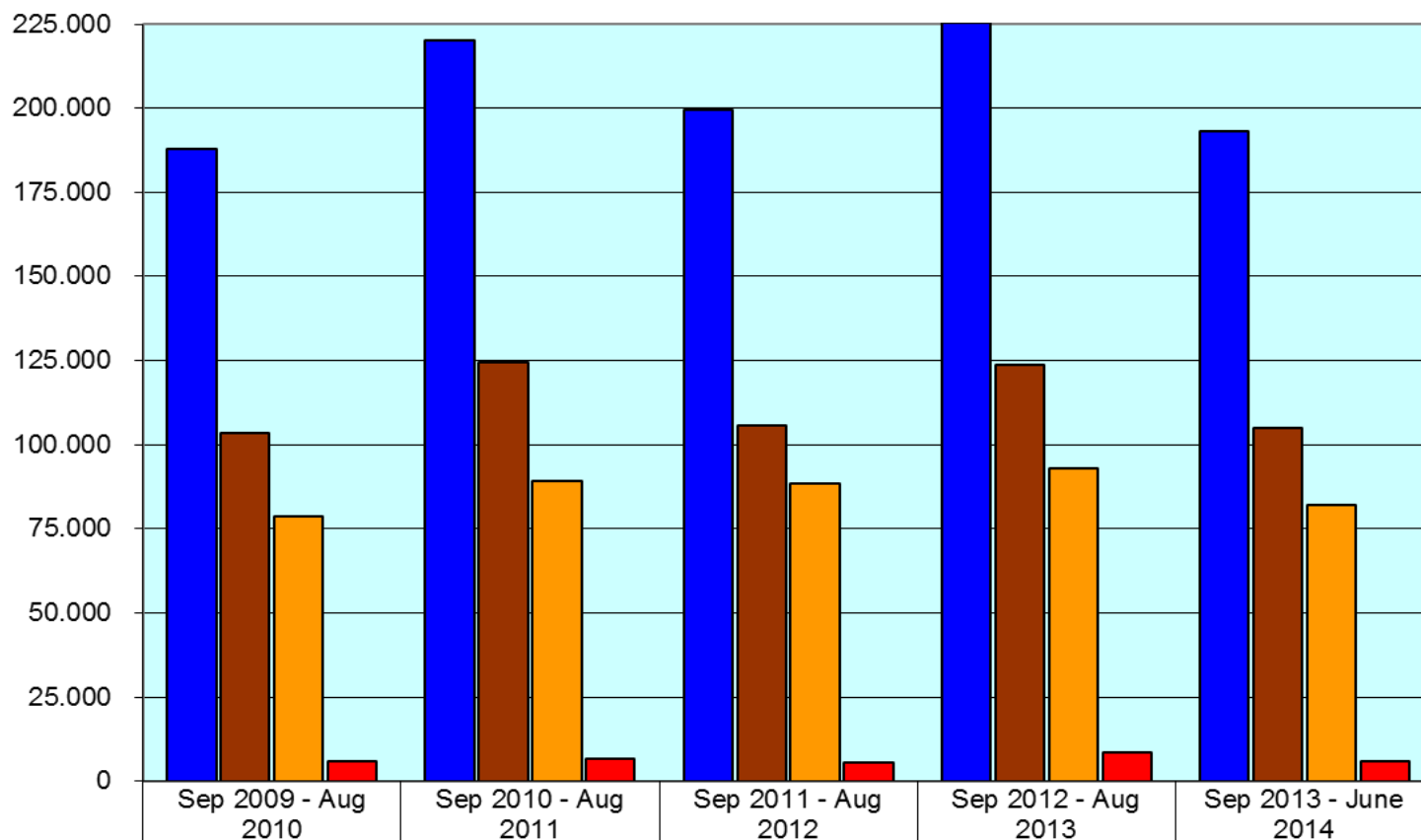


EU28 Imports from Extra – EU28 (per type)



European Commission
Agriculture and Rural Development

Tonnes



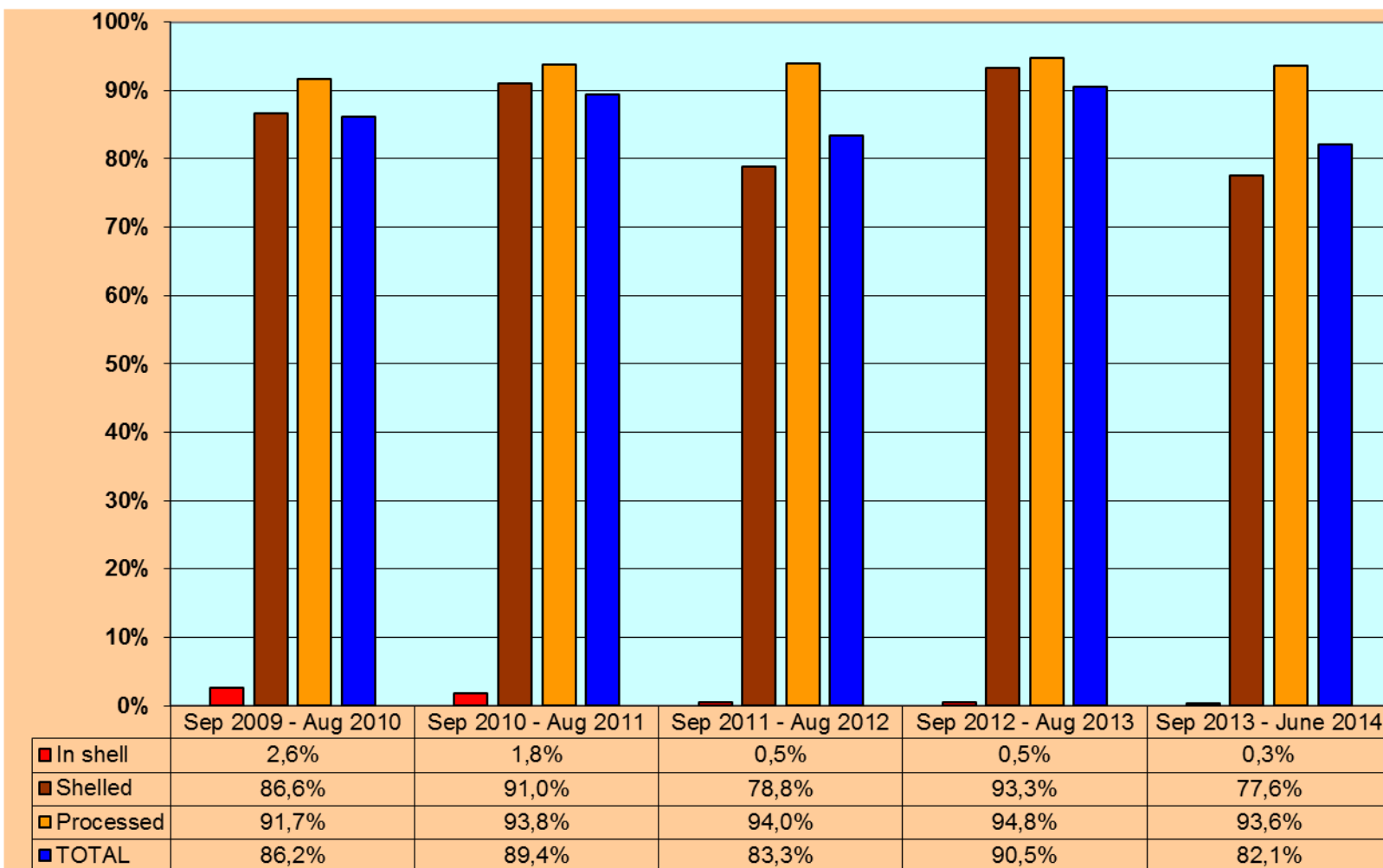
■ Total imports from World	187.900	220.237	199.557	225.247	192.988
■ Shelled (CN 0802.22)	103.573	124.466	105.659	123.861	104.877
■ Processed (CN 2008.19.19+95)	78.627	89.113	88.278	93.072	82.193
■ In shell (CN 0802.21)	5.700	6.658	5.620	8.314	5.917



Share of EU28 Imports from Turkey / Extra EU28 (per type)



European Commission
Agriculture and Rural Development

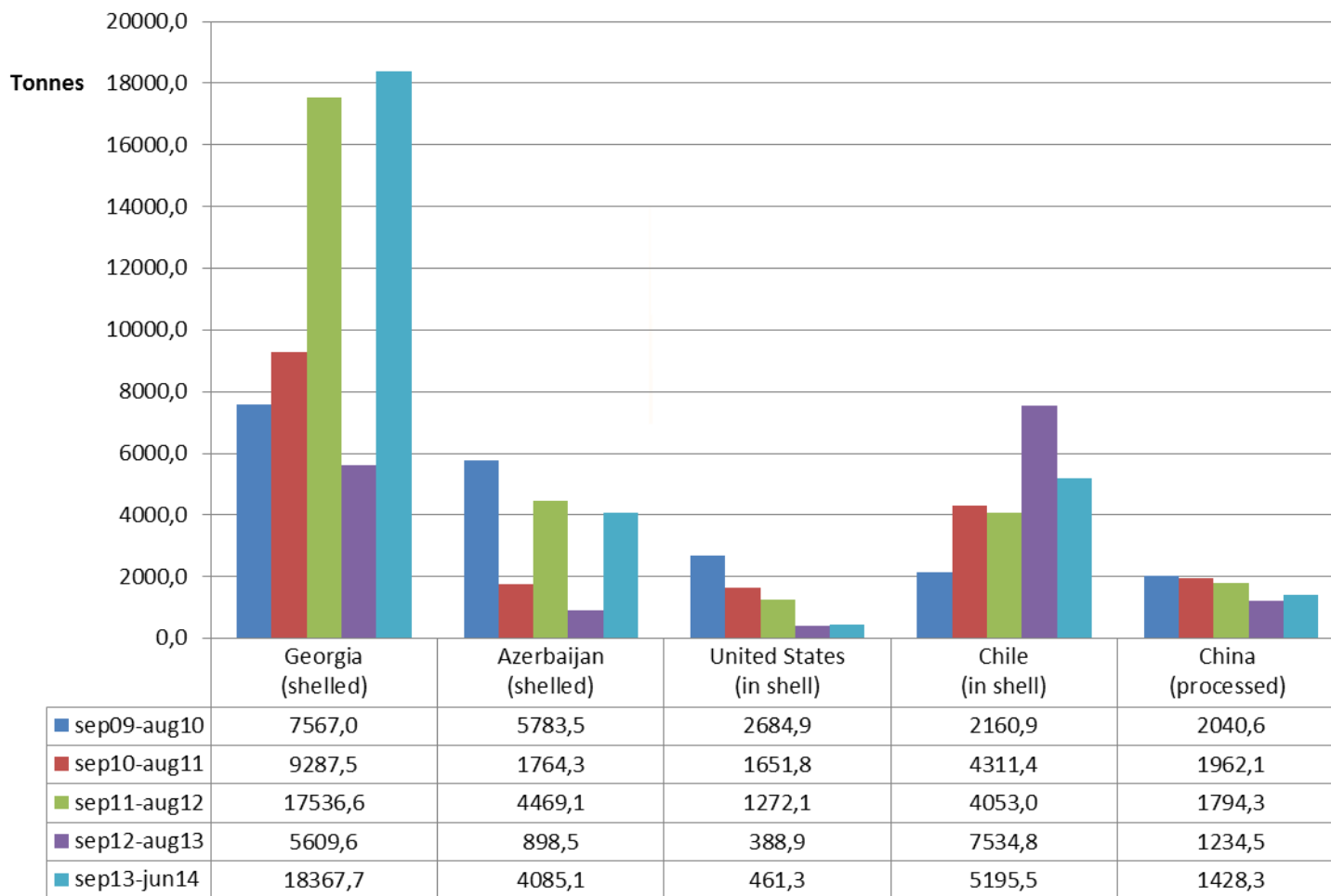




EU28 Imports by main partners (other than Turkey)



European Commission
Agriculture and Rural Development

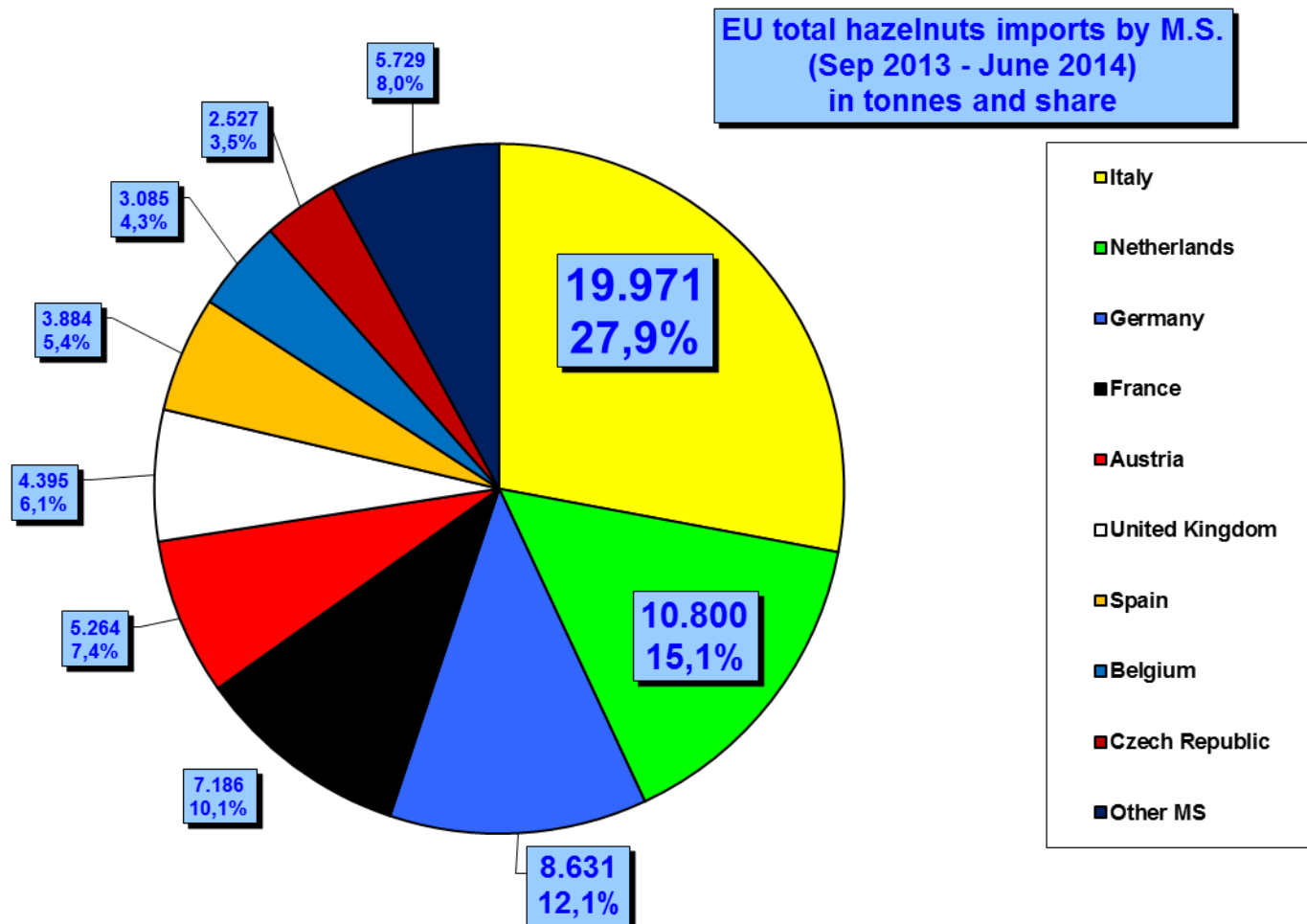




Total EU28 Imports by Member States



European Commission
Agriculture and Rural Development

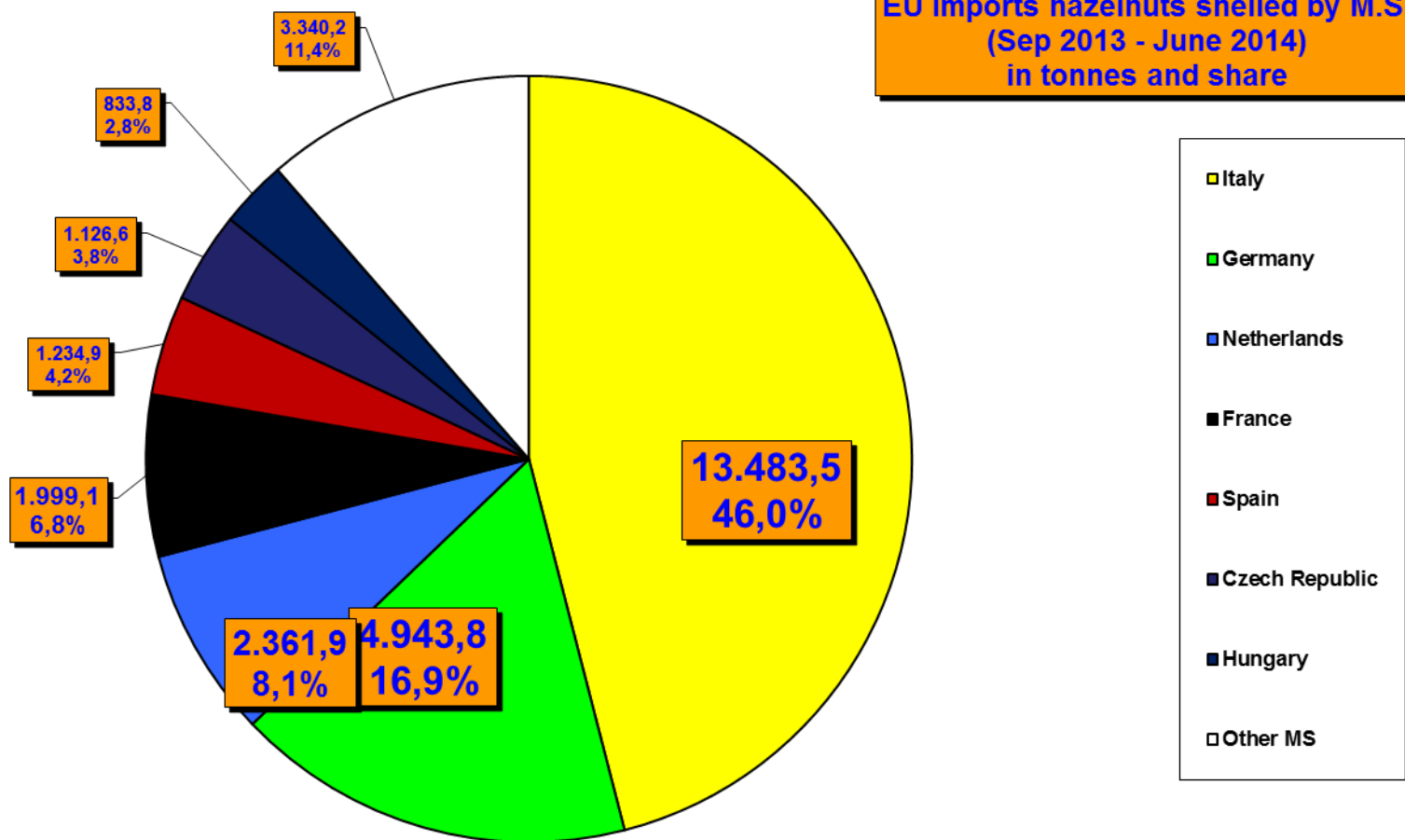




Shelled EU28 Imports by Member States



European Commission
Agriculture and Rural Development



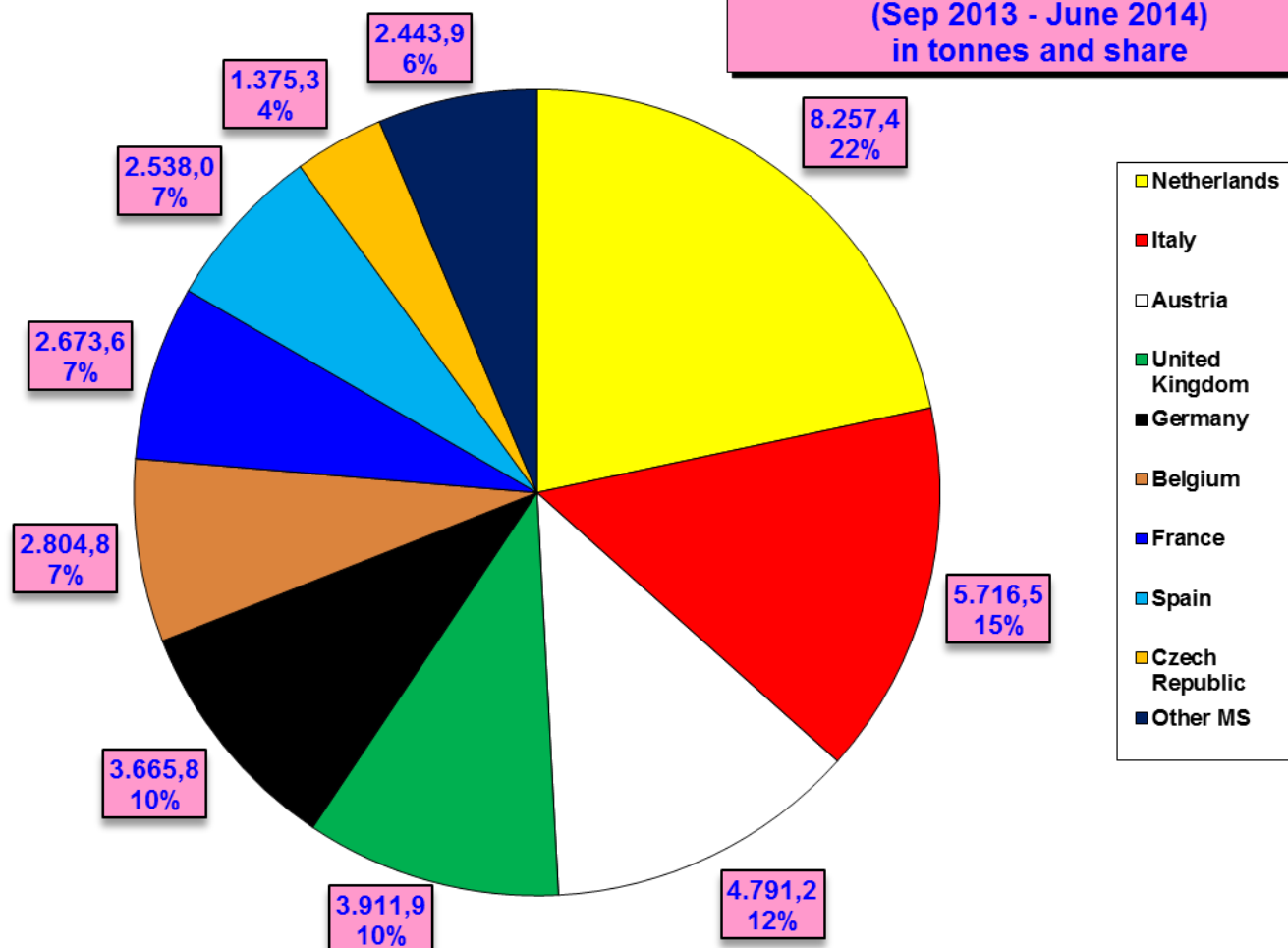


Processed EU28 Imports by Member States



European Commission
Agriculture and Rural Development

EU Processed Hazelnuts imports by M.S.
(Sep 2013 - June 2014)
in tonnes and share



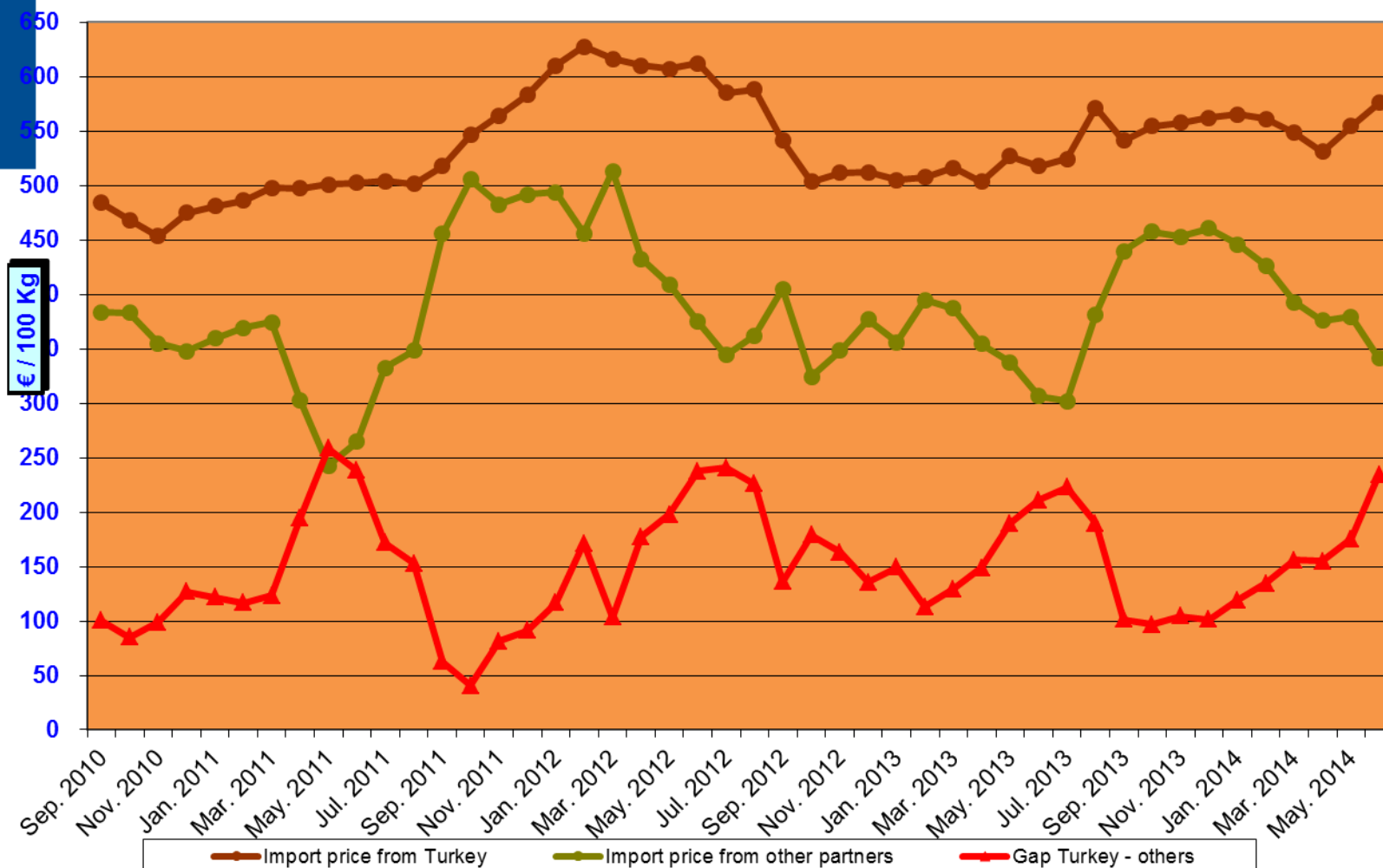


EU28 Price Imports

(All type hazelnuts per 100 kg)



European Commission
Agriculture and Rural Development



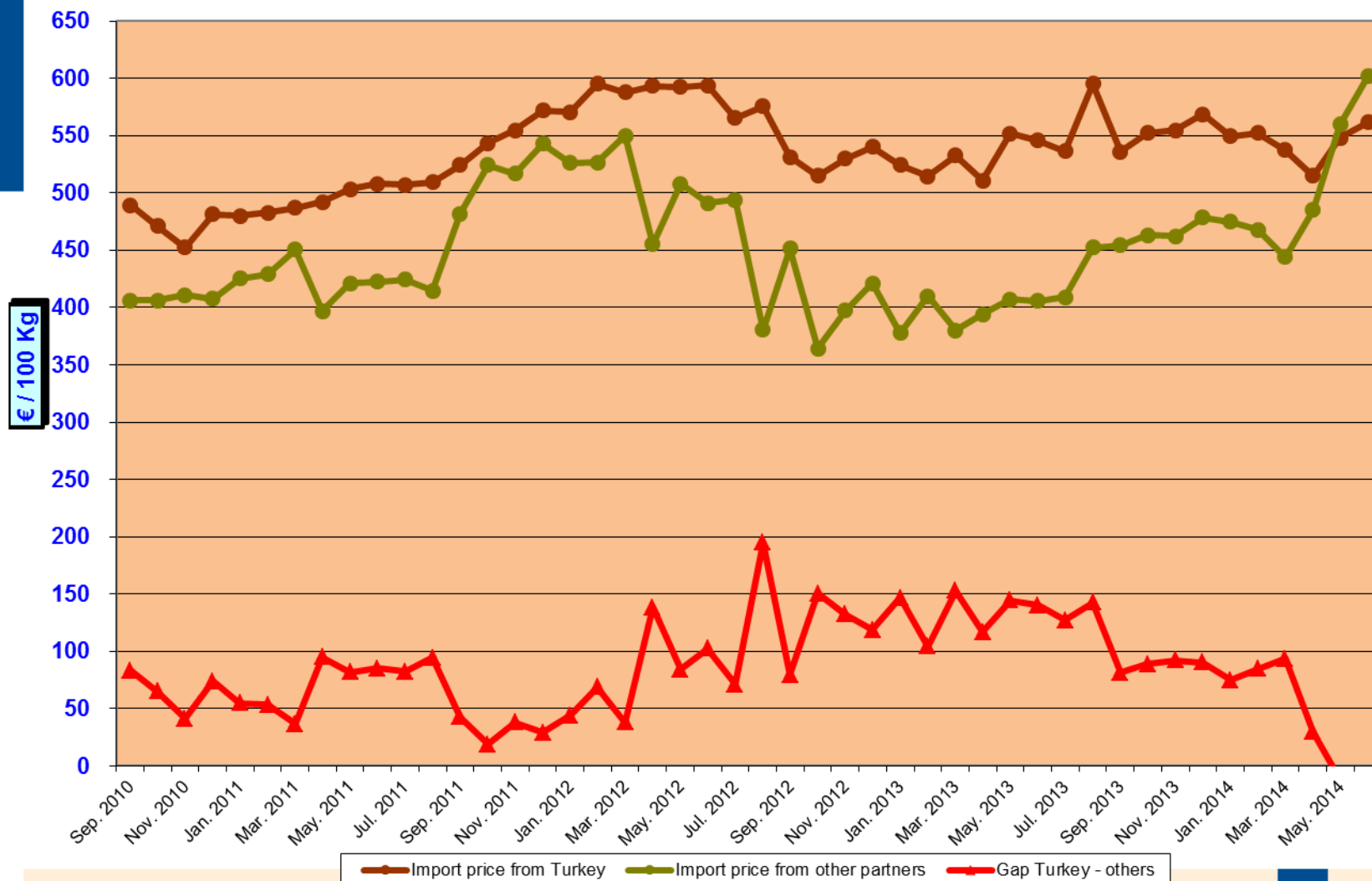
Source: EUROSTAT



EU28 Price Imports (Shelled hazelnuts per 100 kg)



European Commission
Agriculture and Rural Development



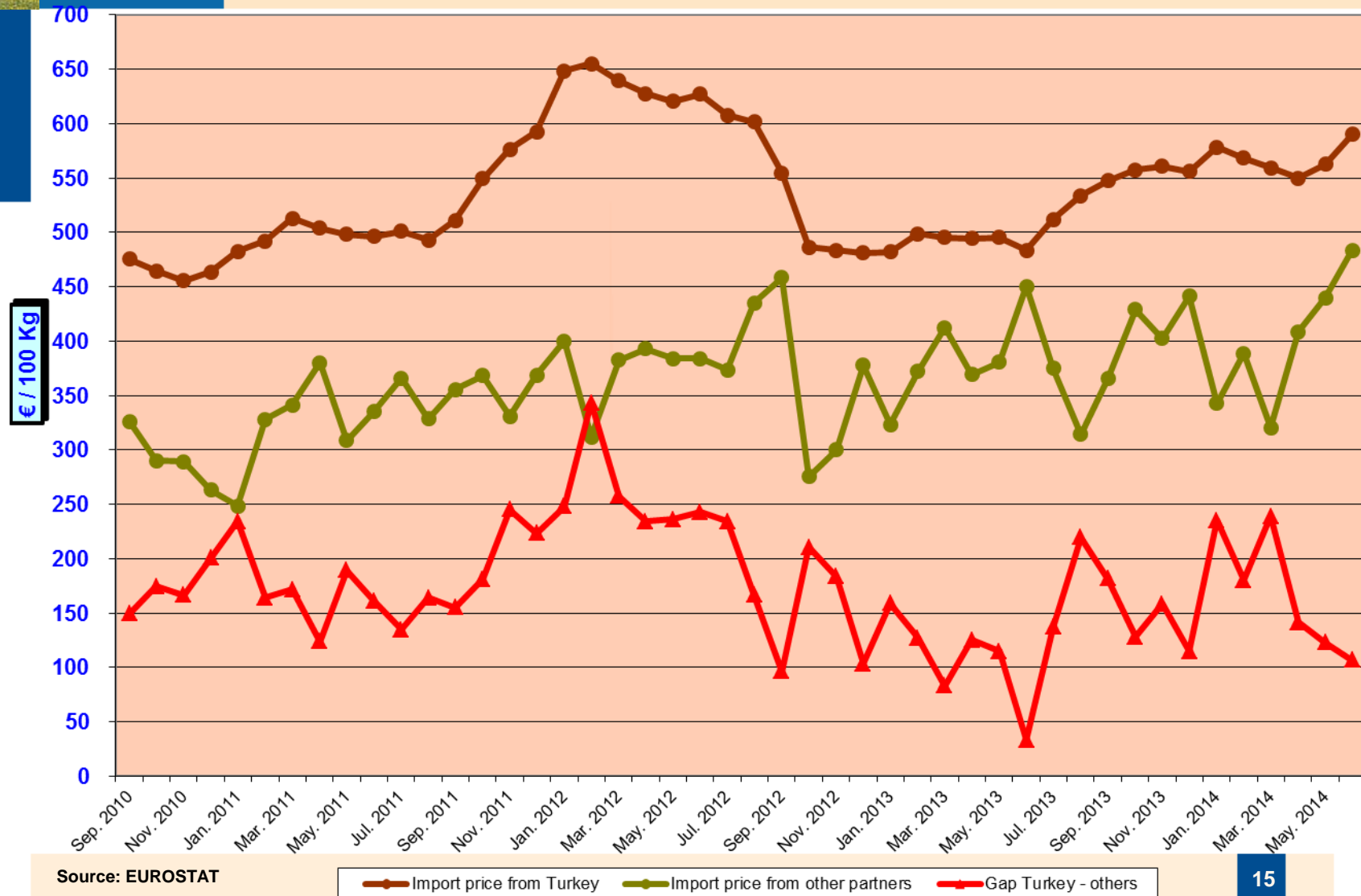
Source: EUROSTAT



EU28 Price Imports (Processed hazelnuts per 100 kg)



European Commission
Agriculture and Rural Development

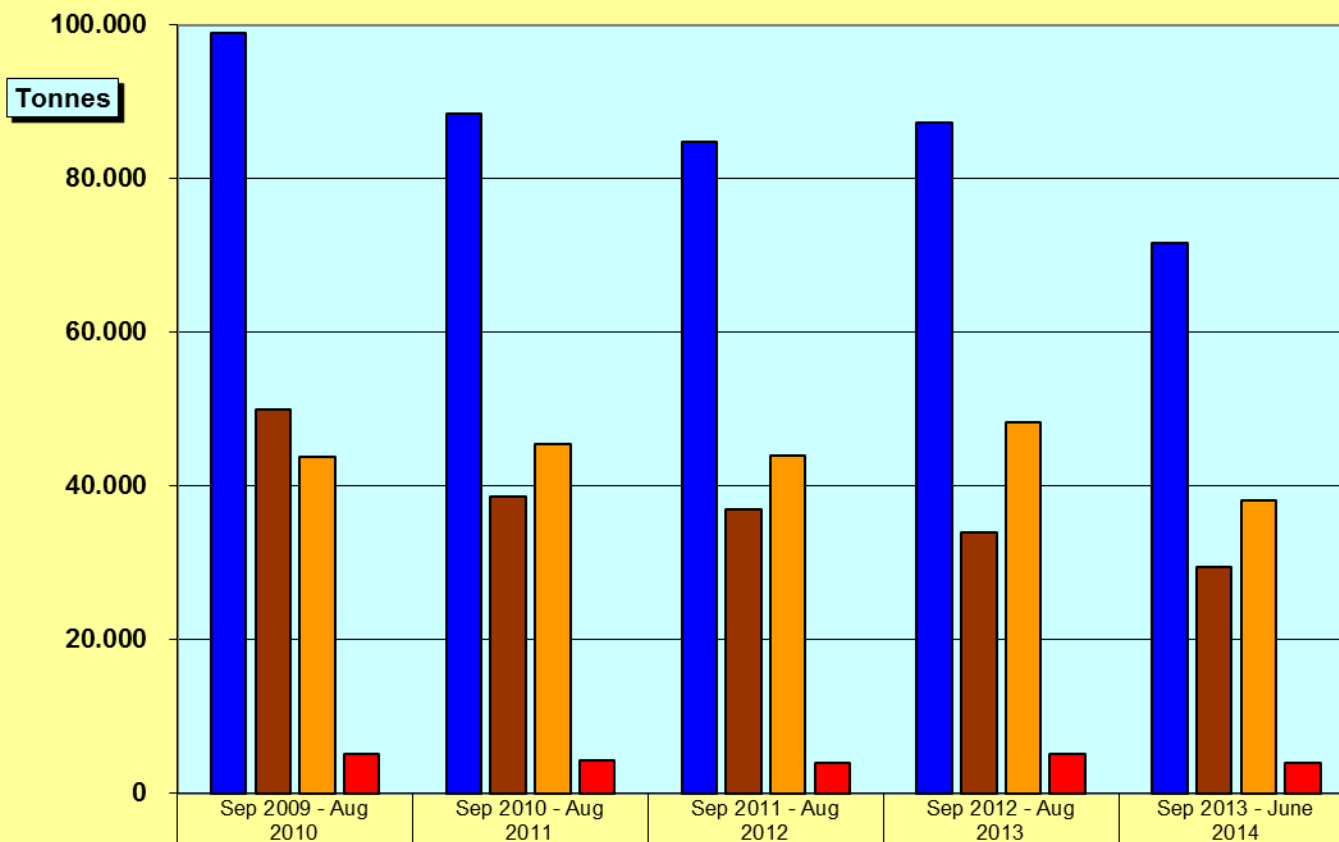




Trade Intra-EU28 (per type)



European Commission
Agriculture and Rural Development



Source: EUROSTAT

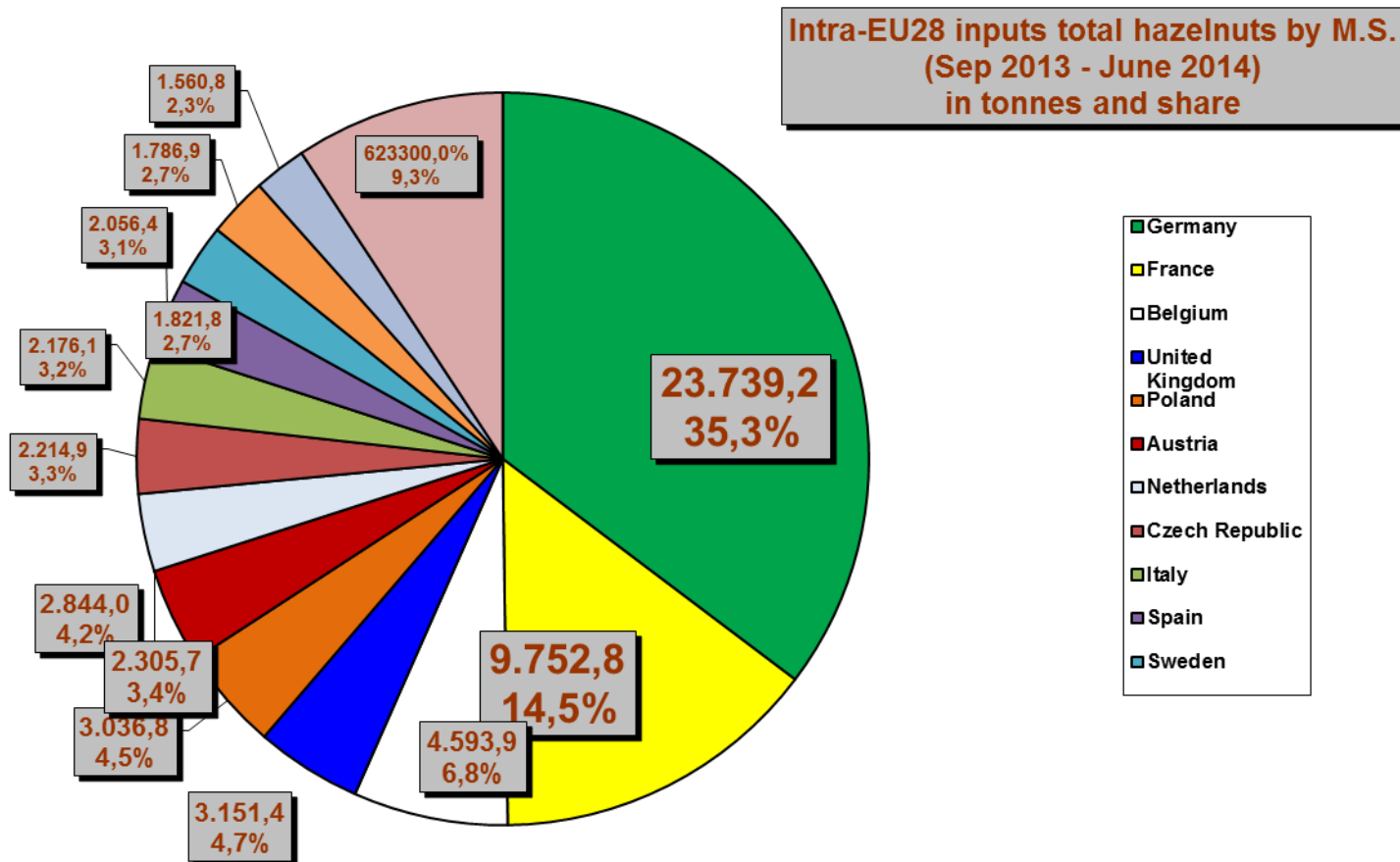


Trade intra EU28

Share M.S. inputs



European Commission
Agriculture and Rural Development



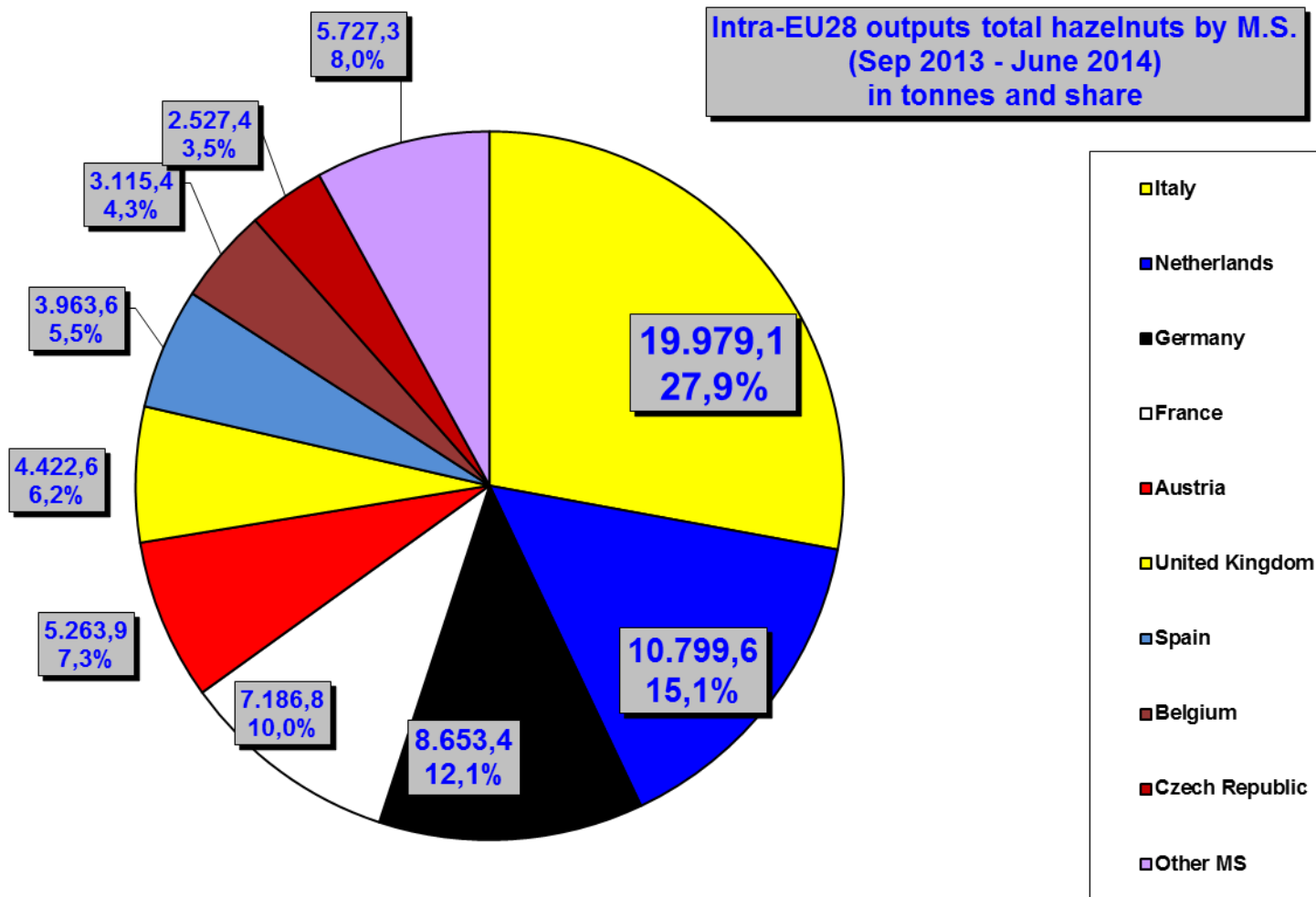


Trade intra EU28

Share M.S. outputs



European Commission
Agriculture and Rural Development

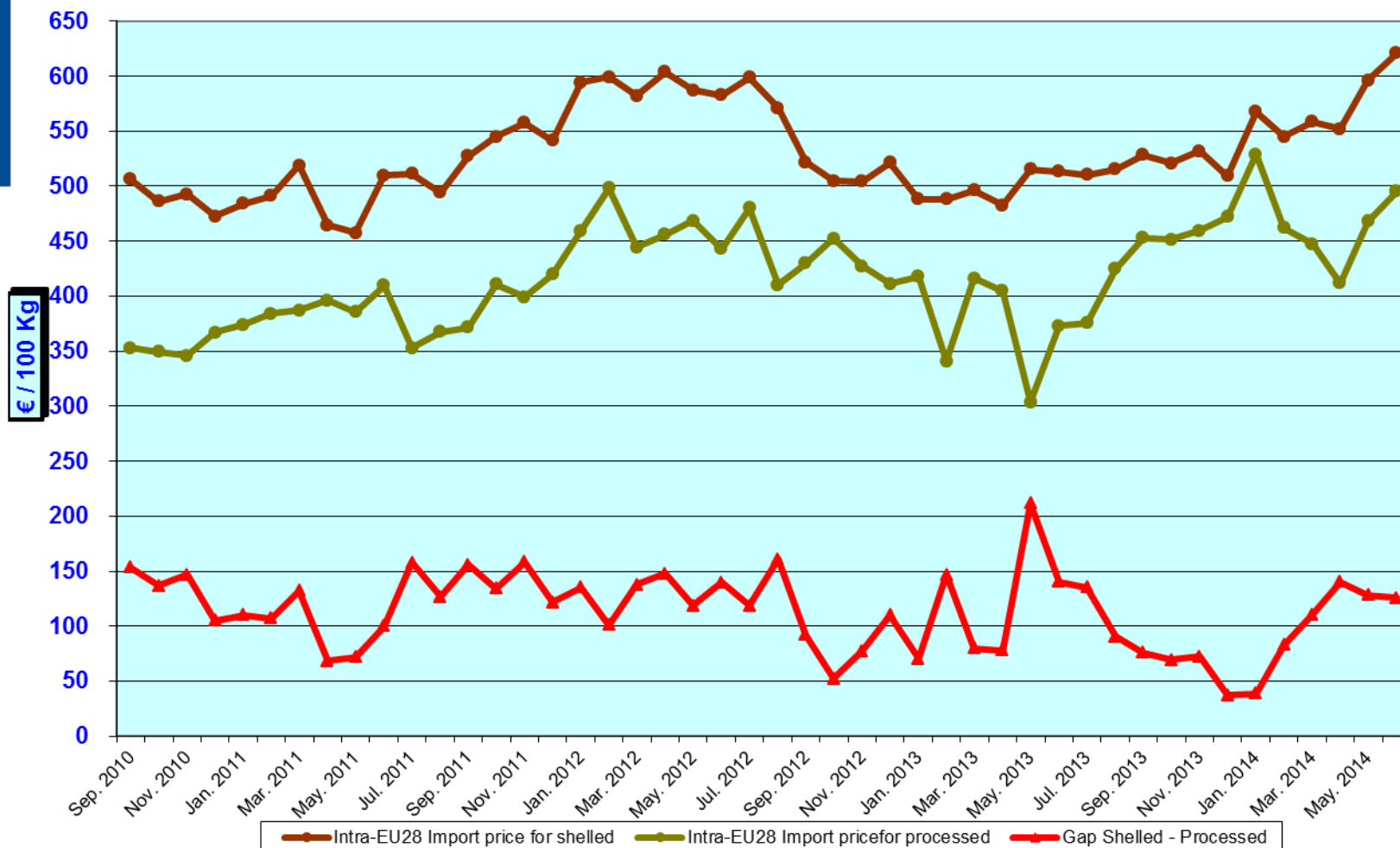




Intra 28 inputs prices



European Commission
Agriculture and Rural Development



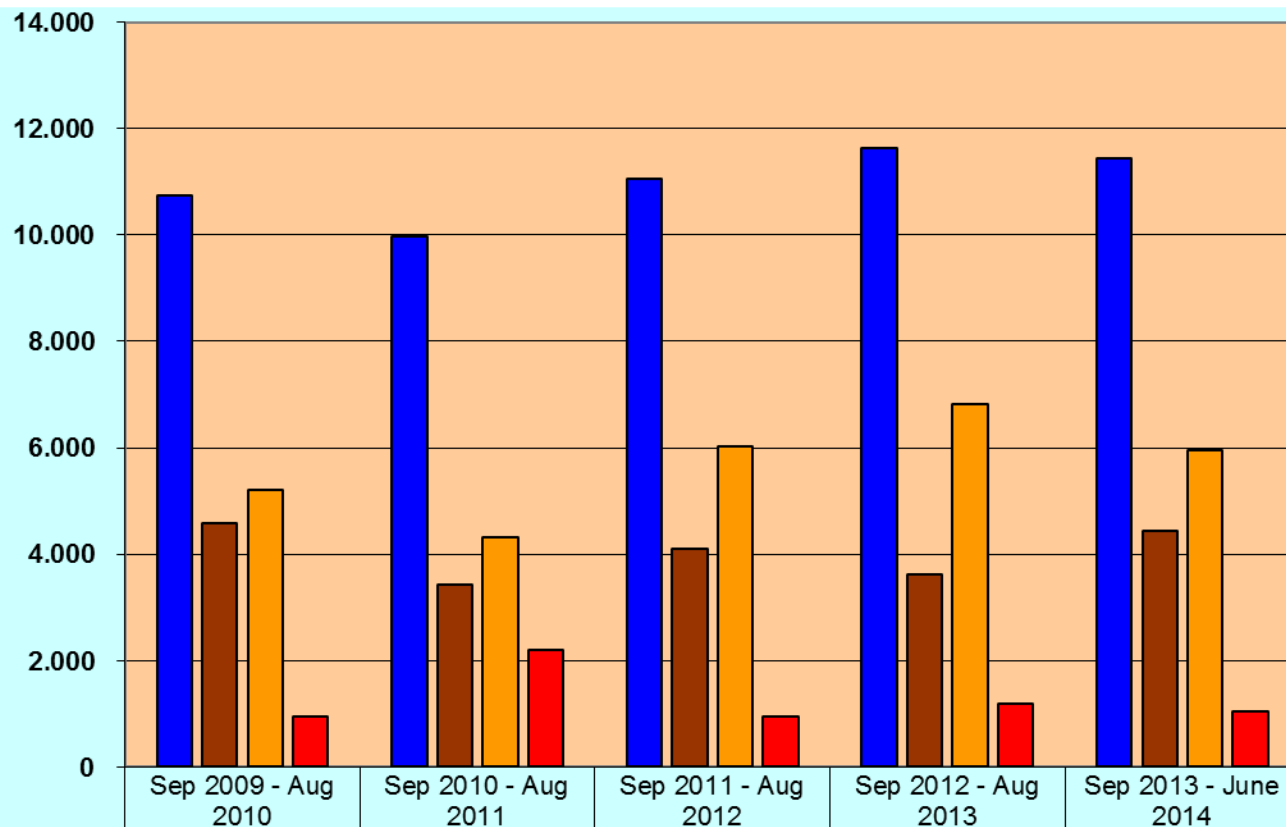


EU28 Exports to Extra – EU 28 (per type)



European Commission
Agriculture and Rural Development

Tonnes



■ Total EU27 exports to World	10.751	9.965	11.060	11.624	11.447
■ Shelled (CN 0802.22)	4.594	3.440	4.091	3.616	4.449
■ Processed (CN 0808.19.19+95)	5.218	4.321	6.024	6.810	5.951
■ In shell (CN 0802.21)	939	2.205	946	1.198	1.047

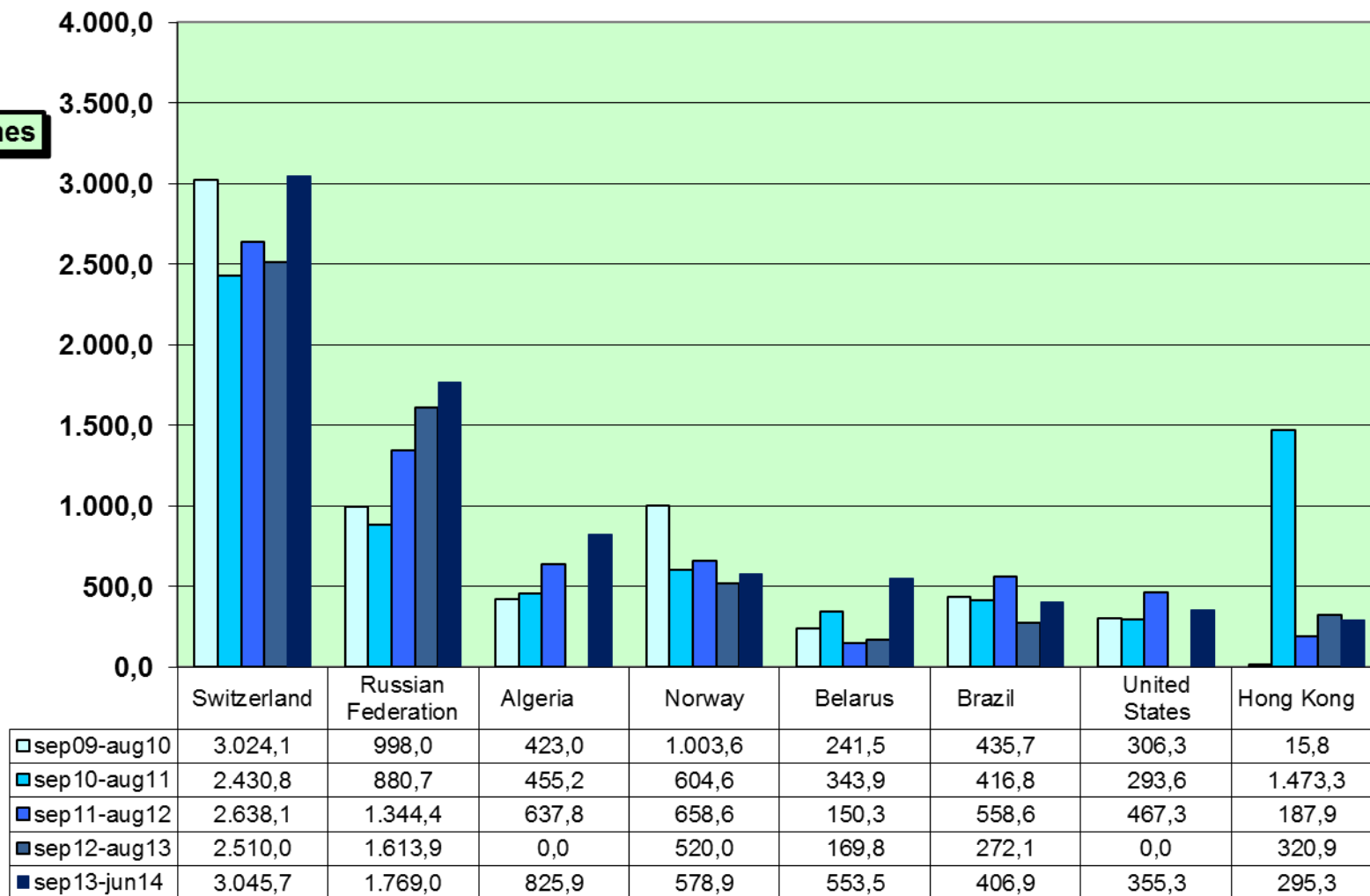


EU28 Exports Extra EU28 (to main partners)



European Commission
Agriculture and Rural Development

Tonnes



Source: EUROSTAT

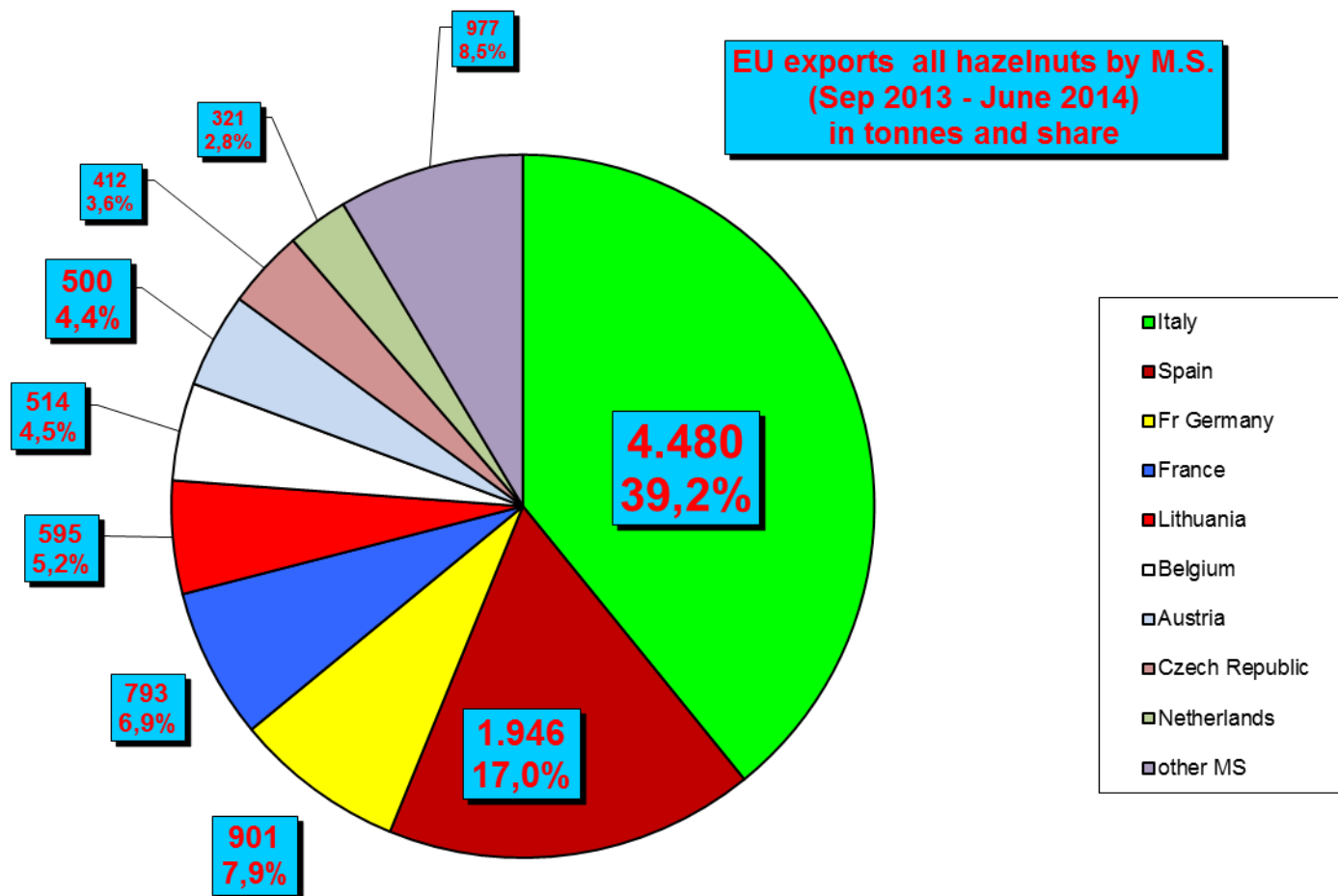


EU28 Exports to Extra EU28

Total hazelnuts by M.S.



European Commission
Agriculture and Rural Development

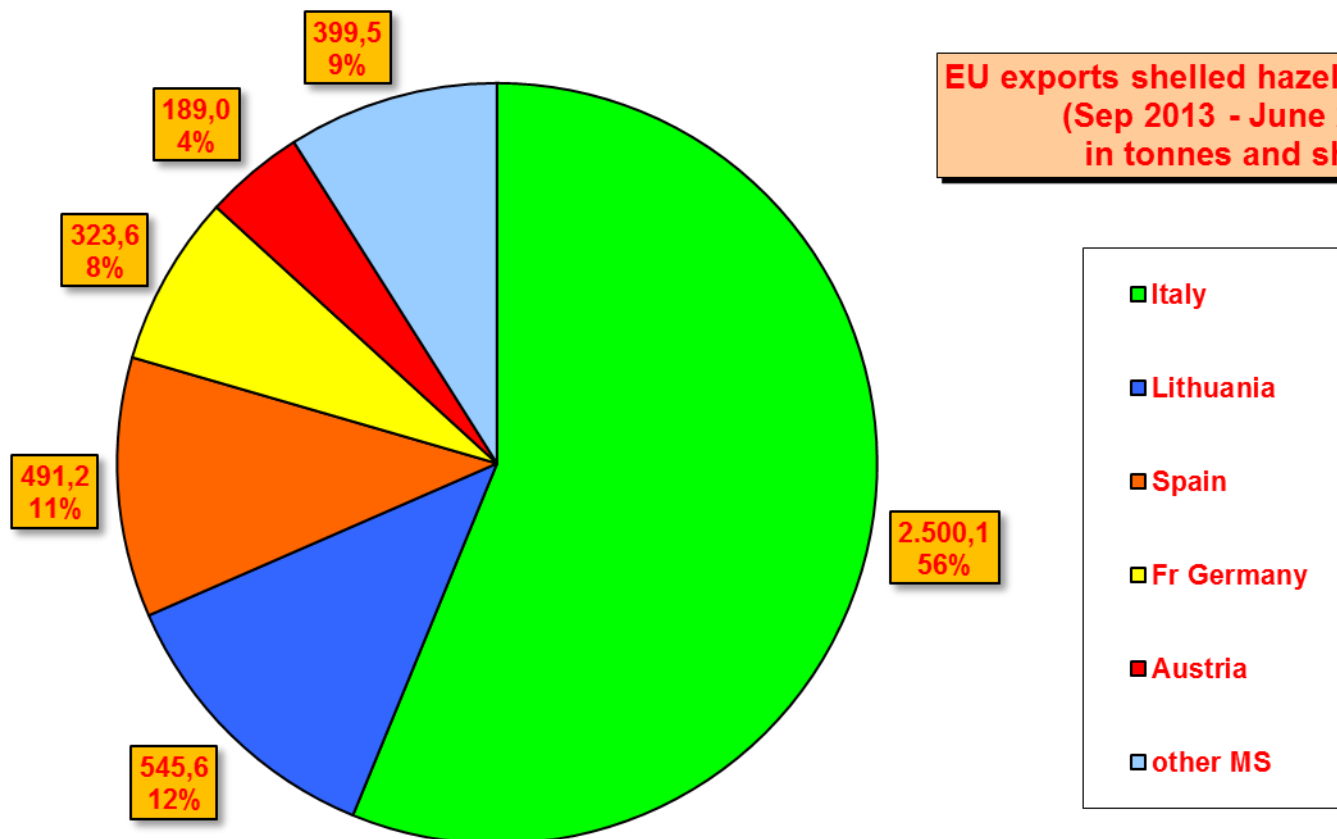




EU28 Exports to Extra EU28 Shelled hazelnuts by M.S.



European Commission
Agriculture and Rural Development

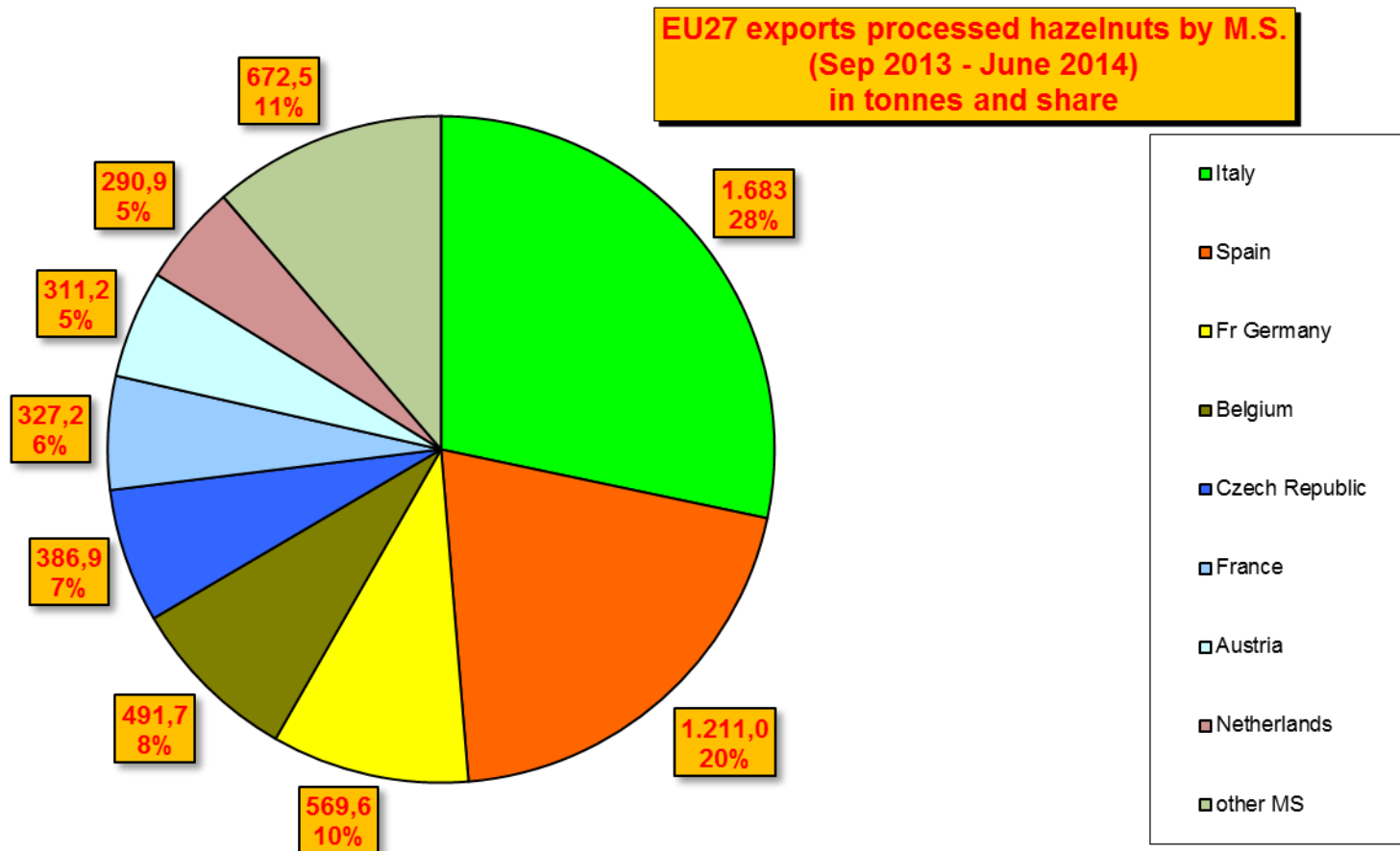




EU28 Exports to Extra EU28 Processed by M.S.



European Commission
Agriculture and Rural Development

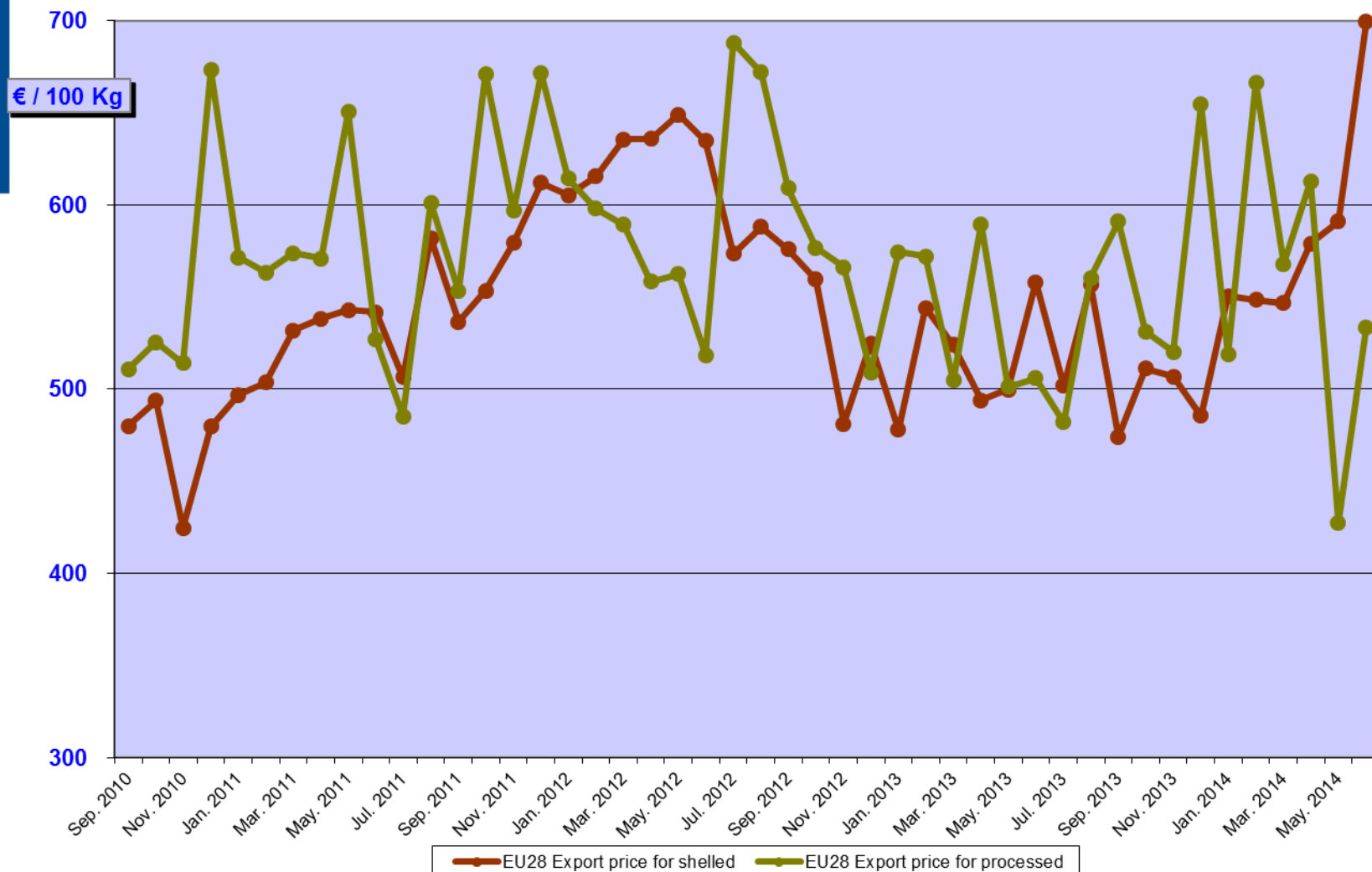




EU28 Exports prices to Extra – EU28



European Commission
Agriculture and Rural Development



Source: EUROSTAT



European Commission
Agriculture and Rural Development

Thank you for your attention!